



@ricktimbs
@SSFC_NYS

SSFC

THE STATEWIDE SCHOOL FINANCE CONSORTIUM

Dedicated to Secure Equitable Funding for New York State Public Schools

State Aid & New York State Public School Districts Onondaga-Madison & Cortland-Madison School Boards Associations

In education, there is a golden triangle of quantity, quality and equity. You can't just ignore one while strengthening the others.

Sitaram Yechury

Dr. Rick Timbs

Executive Director

Statewide School Finance Consortium

rtimbs@statewideonline.org



01/14/18	County	E(FA0198) 00 2017-18 FOUNDATION AID	E(FA0197) 00 2018-19 FOUNDATION AID	\$ CHANGE IN FOUNDATION AID	% CHANGE IN FOUNDATION AID
BALDWINVILLE	Onondaga	\$25,699,387	\$26,086,270	\$386,883	1.51%
CAZENOVIA	Madison	\$6,186,373	\$6,201,838	\$15,465	0.25%
CHITTENANGO	Madison	\$12,952,628	\$13,124,195	\$171,567	1.32%
CINCINNATUS	Cortland	\$7,364,526	\$7,443,096	\$78,570	1.07%
CORTLAND	Cortland	\$20,247,589	\$20,490,674	\$243,085	1.20%
DE RUYTER	Madison	\$4,169,835	\$4,273,770	\$103,935	2.49%
E SYRACUSE-MIN	Onondaga	\$16,621,544	\$16,905,814	\$284,270	1.71%
FABIUS-POMPEY	Onondaga	\$5,254,417	\$5,328,870	\$74,453	1.42%
FAYETTEVILLE	Onondaga	\$9,375,697	\$9,442,496	\$66,799	0.71%
HOMER	Cortland	\$15,301,489	\$15,529,449	\$227,960	1.49%
JAMESVILLE-DEW	Onondaga	\$6,635,835	\$6,718,536	\$82,701	1.25%
LA FAYETTE	Onondaga	\$6,807,734	\$6,898,188	\$90,454	1.33%
LIVERPOOL	Onondaga	\$42,262,012	\$42,905,829	\$643,817	1.52%
LYNCOURT	Onondaga	\$1,781,697	\$1,847,540	\$65,843	3.70%
MARATHON	Cortland	\$8,982,595	\$9,077,142	\$94,547	1.05%
MARCELLUS	Onondaga	\$8,294,808	\$8,403,679	\$108,871	1.31%
MCGRAW	Cortland	\$5,861,260	\$5,977,839	\$116,579	1.99%
NORTH SYRACUSE	Onondaga	\$44,998,315	\$45,760,006	\$761,691	1.69%
ONONDAGA	Onondaga	\$5,311,681	\$5,386,401	\$74,720	1.41%
SOLVAY	Onondaga	\$9,218,982	\$9,361,824	\$142,842	1.55%
SYRACUSE	Onondaga	\$271,731,423	\$275,782,646	\$4,051,223	1.49%
TULLY	Onondaga	\$6,033,088	\$6,147,929	\$114,841	1.90%
WEST GENESEE	Onondaga	\$19,499,121	\$19,812,105	\$312,984	1.61%
WESTHILL	Onondaga	\$7,439,155	\$7,563,907	\$124,752	1.68%



Dedicated to Secure Equitable Funding for New York State Public Schools

01/14/18

W(FA0001) 00
FOUNDATION AID
BEFORE PHASE-IN

W(FA0001) 00
FOUNDATION AID
BEFORE PHASE-IN
2017-18

DIFFERENCE
FOUNDATION AID
BEFORE PHASE-IN

UNDER/ SAVE
HARMLESS FUNDED
FINAL BUDGET (Based
on W(FA0001) 00
FOUNDATION AID
BEFORE PHASE-IN
(01/14/18 DABTB1)

UNDER/ SAVE
HARMLESS FINAL
BUDGET (Based on
W(FA0001) 00
FOUNDATION AID
BEFORE PHASE-IN
(04/9/17 DABTB1)


BALDWINVILLE	\$33,105,126	\$31,349,206	\$1,755,920	-\$7,018,856	-\$5,649,820
CAZENOVIA	\$6,020,641	\$5,900,413	\$120,228	\$181,197	\$285,960
CHITTENANGO	\$11,279,699	\$10,646,904	\$632,795	\$1,844,496	\$2,305,724
CINCINNATUS	\$8,383,690	\$8,347,581	\$36,109	-\$940,594	-\$983,056
CORTLAND	\$22,227,505	\$21,742,786	\$484,719	-\$1,736,831	-\$1,495,198
DE RUYTER	\$3,838,143	\$3,900,503	-\$62,360	\$435,627	\$269,331
E SYRACUSE-MIN	\$21,166,225	\$20,350,114	\$816,111	-\$4,260,411	-\$3,728,570
FABIUS-POMPEY	\$4,595,498	\$4,424,464	\$171,034	\$733,372	\$829,953
FAYETTEVILLE	\$14,594,415	\$13,658,392	\$936,023	-\$5,151,919	-\$4,282,941
HOMER	\$17,054,909	\$17,476,824	-\$421,915	-\$1,525,460	-\$2,175,190
JAMESVILLE-DEW	\$11,617,855	\$11,576,711	\$41,144	-\$4,899,319	-\$4,936,839
LA FAYETTE	\$7,435,423	\$6,892,608	\$542,815	-\$537,235	-\$84,874
LIVERPOOL	\$48,093,083	\$45,013,560	\$3,079,523	-\$5,187,254	-\$2,751,549
LYNCOURT	\$3,631,245	\$3,245,471	\$385,774	-\$1,783,705	-\$1,462,461
MARATHON	\$11,213,632	\$9,819,502	\$1,394,130	-\$2,136,490	-\$836,908
MARCELLUS	\$7,931,025	\$7,944,666	-\$13,641	\$472,654	\$350,142
MCGRAW	\$7,542,625	\$6,956,993	\$585,632	-\$1,564,786	-\$1,095,734
NORTH SYRACUSE	\$56,522,084	\$53,278,729	\$3,243,355	-\$10,762,078	-\$8,280,414
ONONDAGA	\$5,685,223	\$5,234,419	\$450,804	-\$298,822	\$55,149
SOLVAY	\$12,634,242	\$11,783,542	\$850,700	-\$3,272,418	-\$2,564,560
SYRACUSE	\$321,081,331	\$305,140,261	\$15,941,070	-\$45,298,685	-\$33,461,402
TULLY	\$5,638,240	\$5,651,121	-\$12,881	\$509,689	\$381,967
WEST GENESEE	\$25,468,986	\$24,668,992	\$799,994	-\$5,656,881	-\$5,169,871
WESTHILL	\$9,543,284	\$8,978,993	\$564,291	-\$1,979,377	-\$1,539,839



01/14/18

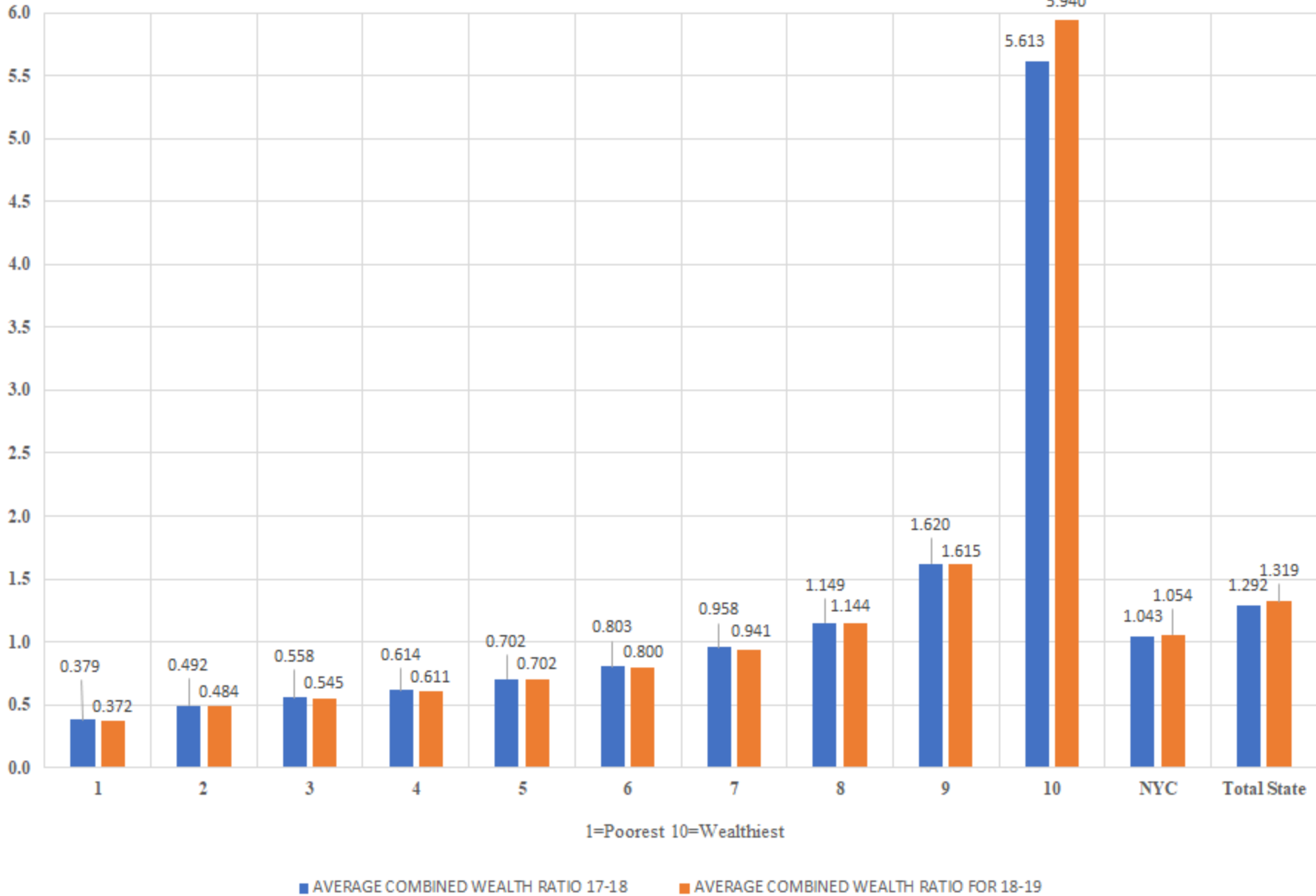
	AC(WM0195) 05 PUPIL WEALTH RATIO (PWR) FOR FND SSR 2018-19	AD(WM0196) 05 ALTERNATE PUPIL WEALTH RATIO (APWR), FND 2018-19	AE(WM0197) 05 COMBINED WEALTH RATIO FOR 18-19 FND SSR 2018-19	G(WM0180) 05 PUPIL WEALTH RATIO (PWR) 2017-18	H(WM0181) 05 ALTERNATE PUPIL WEALTH RATIO (APWR) 2017-18	I(WM0182) 05 COMBINED WEALTH RATIO (CWR) FOR 17- 18 AID 2017- 18	CWR DIFFERENCE 2017-18 to 2018-19	M(PC0260) 04 LUNCH %, K-6, 3-YEAR AVG. 2018-19	M(PC0260) 04 LUNCH %, K-6, 3-YEAR AVG. 2017-18	FRPL DIFFERENCE 2017-18 TO 2018-19
BALDWINVILLE	0.561	0.786	0.673	0.5770	0.7850	0.6800	-0.007	27.17%	25.65%	1.52%
CAZENOVIA	0.968	1.098	1.033	0.9770	1.0350	1.0050	0.028	24.45%	22.37%	2.08%
CHITTENANGO	0.582	0.712	0.647	0.5890	0.7180	0.6530	-0.006	39.36%	38.75%	0.61%
CINCINNATUS	0.501	0.388	0.444	0.5020	0.3780	0.4400	0.004	58.79%	56.83%	1.96%
CORTLAND	0.547	0.581	0.563	0.5450	0.5690	0.5560	0.007	58.99%	58.18%	0.81%
DE RUYTER	0.702	0.455	0.578	0.6850	0.4380	0.5610	0.017	58.54%	58.01%	0.53%
E SYRACUSE-MIN	0.776	0.633	0.704	0.7730	0.6190	0.6950	0.009	42.78%	41.91%	0.87%
FABIUS-POMPEY	0.668	0.829	0.748	0.6680	0.8560	0.7620	-0.014	33.90%	33.00%	0.90%
FAYETTEVILLE	0.757	1.379	1.067	0.7840	1.4100	1.0970	-0.030	11.81%	10.60%	1.21%
HOMER	0.590	0.642	0.616	0.5760	0.6150	0.5950	0.021	46.61%	45.79%	0.82%
JAMESVILLE-DEW	0.789	1.253	1.020	0.7990	1.2450	1.0210	-0.001	17.66%	16.44%	1.22%
LA FAYETTE	0.483	0.688	0.585	0.5080	0.7190	0.6130	-0.028	49.62%	48.03%	1.59%
LIVERPOOL	0.582	0.720	0.651	0.5940	0.7550	0.6740	-0.023	41.22%	39.69%	1.53%
LYNCOURT	0.492	0.542	0.517	0.5320	0.5760	0.5540	-0.037	62.55%	60.51%	2.04%
MARATHON	0.461	0.404	0.432	0.5000	0.4270	0.4630	-0.031	59.77%	58.64%	1.13%
MARCELLUS	0.670	0.845	0.757	0.6660	0.8150	0.7400	0.017	17.67%	15.53%	2.14%
MCGRAW	0.434	0.484	0.459	0.4480	0.4820	0.4650	-0.006	61.61%	58.31%	3.30%
NORTH SYRACUSE	0.566	0.695	0.630	0.5750	0.6970	0.6350	-0.005	36.39%	34.94%	1.45%
ONONDAGA	0.555	0.707	0.630	0.5760	0.7280	0.6520	-0.022	44.04%	41.96%	2.08%
SOLVAY	0.553	0.590	0.571	0.5640	0.6020	0.5830	-0.012	64.02%	61.08%	2.94%
SYRACUSE	0.287	0.328	0.307	0.2910	0.3240	0.3070	0.000	80.24%	78.55%	1.69%
TULLY	0.781	0.772	0.776	0.7550	0.7380	0.7460	0.030	32.78%	31.19%	1.59%
WEST GENESEE	0.610	0.790	0.700	0.6200	0.7770	0.6980	0.002	24.19%	20.87%	3.32%
WESTHILL	0.573	0.853	0.712	0.5810	0.8390	0.7090	0.003	18.55%	16.33%	2.22%



 01/14/18	EXECUTIVE BUDGET FOUNDATION AID PER STUDENT	FOUNDATION AID INCREASE PER STUDENT 2017-18 TO EXECUTIVE BUDGET 2018-19	UNDER/ SAVE HARMLESS FUNDED PER STUDENT FINAL BUDGET 2017-18	Economic Region Title	CWR Decile 1=Poorest 10=Wealthiest	FRPL Decile 1=Poorest 10=Wealthiest	CENSUS Decile 1=Poorest 10=Wealthiest
BALDWINVILLE	\$4,652	\$69	-\$1,252	Central New York	5	8	8
CAZENOVIA	\$4,313	\$11	\$126	Central New York	8	8	8
CHITTENANGO	\$6,693	\$87	\$941	Central New York	4	7	6
CINCINNATUS	\$13,912	\$147	-\$1,758	Central New York	2	3	1
CORTLAND	\$8,446	\$100	-\$716	Central New York	3	3	1
DE RUYTER	\$11,773	\$286	\$1,200	Central New York	4	3	3
E SYRACUSE-MIN	\$5,286	\$89	-\$1,332	Central New York	5	6	7
FABIUS-POMPEY	\$8,211	\$115	\$1,130	Central New York	6	7	7
FAYETTEVILLE	\$2,212	\$16	-\$1,207	Central New York	8	9	9
HOMER	\$8,030	\$118	-\$789	Central New York	4	5	4
JAMESVILLE-DEW	\$2,325	\$29	-\$1,695	Central New York	7	9	6
LA FAYETTE	\$7,947	\$104	-\$619	Central New York	4	5	8
LIVERPOOL	\$5,891	\$88	-\$712	Central New York	5	6	7
LYNCOURT	\$4,774	\$170	-\$4,609	Central New York	3	2	4
MARATHON	\$12,713	\$132	-\$2,992	Central New York	1	3	4
MARCELLUS	\$5,246	\$68	\$295	Central New York	6	9	8
MCGRAW	\$11,029	\$215	-\$2,887	Central New York	2	2	4
NORTH SYRACUSE	\$5,164	\$86	-\$1,215	Central New York	4	7	7
ONONDAGA	\$6,344	\$88	-\$352	Central New York	4	6	9
SOLVAY	\$6,556	\$100	-\$2,292	Central New York	3	2	4
SYRACUSE	\$12,556	\$184	-\$2,062	Central New York	1	1	1
TULLY	\$7,416	\$139	\$615	Central New York	6	7	6
WEST GENESEE	\$4,368	\$69	-\$1,247	Central New York	5	8	9
WESTHILL	\$4,184	\$69	-\$1,095	Central New York	5	9	8



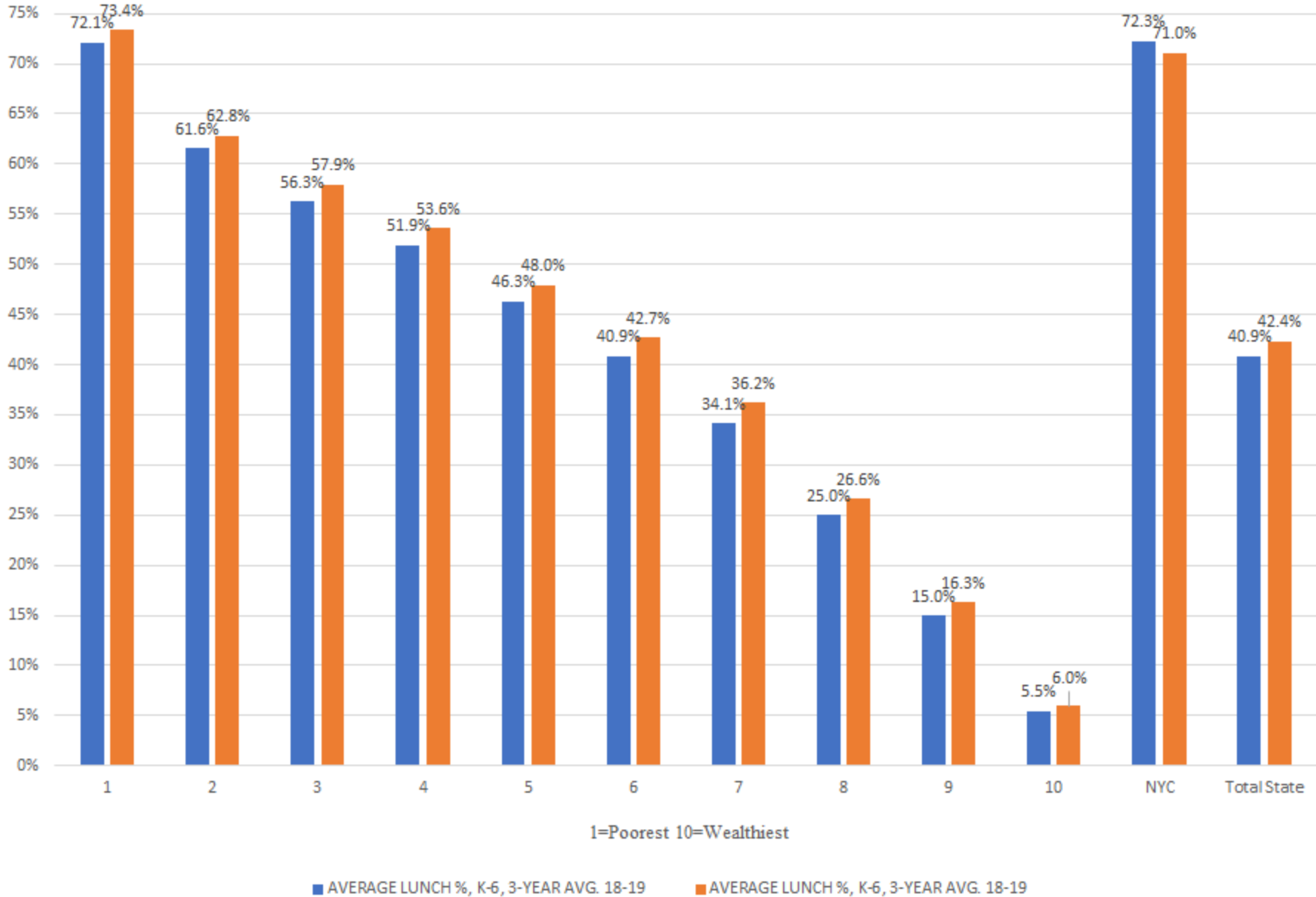
Comparison Average CWR in Each CWR Decile: 2017-18 to 2018-19



Indications you are getting poorer or have a heavier burden



Comparison Average FRPL in Each FRPL Decile: 2017-18 to 2018-19



Indications you are getting poorer or have a heavier burden

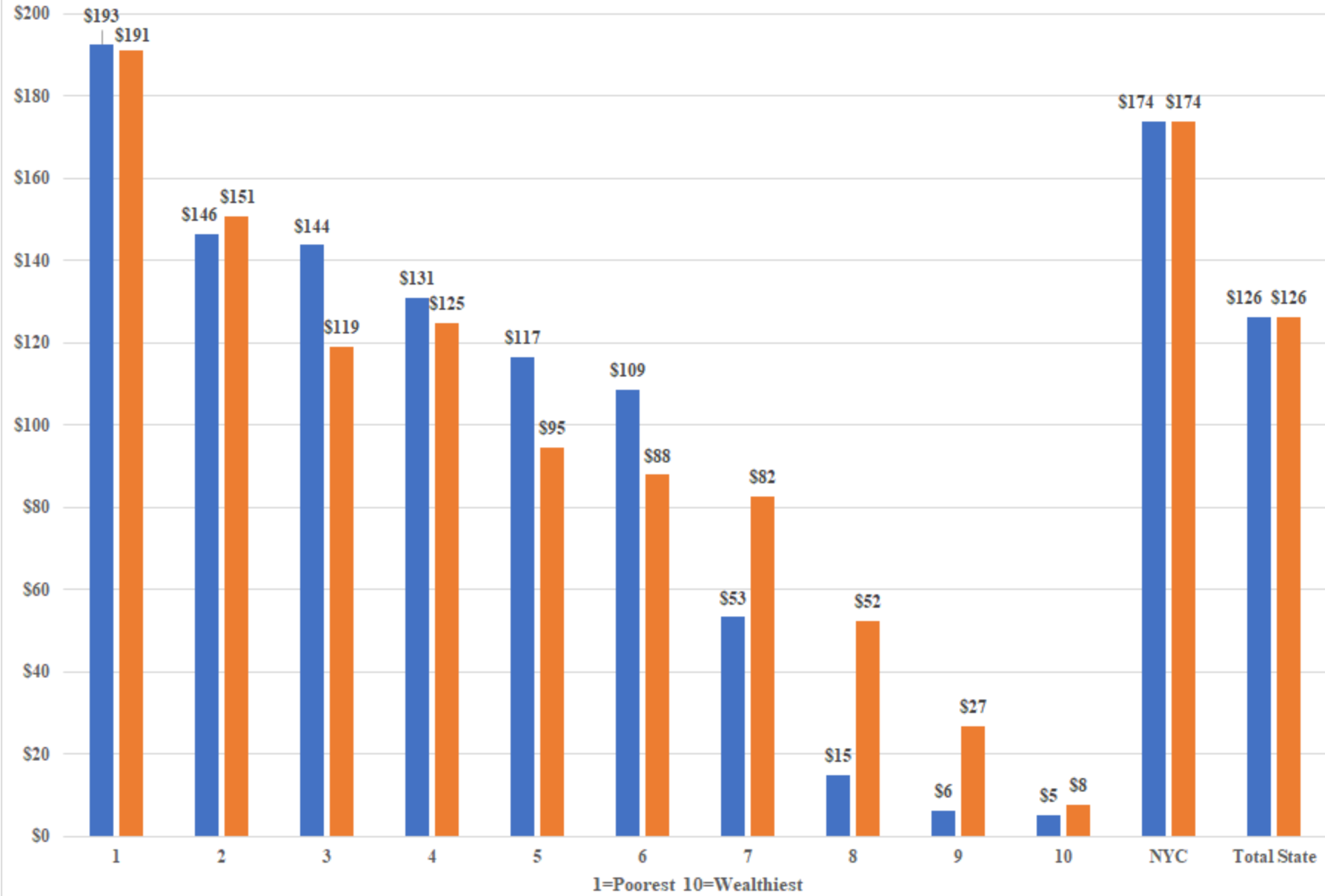


	CWR DIFFERENCE 2017-18 to 2018-19	FRPL DIFFERENCE 2017-18 TO 2018-19	ENROLLMENT DIFFERENCE 2017-18 to 2018-19
01/14/18			
BALDWINVILLE	-0.007	1.52%	-21
CAZENOVIA	0.028	2.08%	18
CHITTENANGO	-0.006	0.61%	-43
CINCINNATUS	0.004	1.96%	27
CORTLAND	0.007	0.81%	-1
DE RUYTER	0.017	0.53%	1
E SYRACUSE-MIN	0.009	0.87%	4
FABIUS-POMPEY	-0.014	0.90%	11
FAYETTEVILLE	-0.030	1.21%	-13
HOMER	0.021	0.82%	13
JAMESVILLE-DEW	-0.001	1.22%	29
LA FAYETTE	-0.028	1.59%	9
LIVERPOOL	-0.023	1.53%	7
LYNCOURT	-0.037	2.04%	10
MARATHON	-0.031	1.13%	-6
MARCELLUS	0.017	2.14%	34
MCGRAW	-0.006	3.30%	-19
NORTH SYRACUSE	-0.005	1.45%	-135
ONONDAGA	-0.022	2.08%	-1
SOLVAY	-0.012	2.94%	10
SYRACUSE	0.000	1.69%	-646
TULLY	0.030	1.59%	-9
WEST GENESEE	0.002	3.32%	81
WESTHILL	0.003	2.22%	-26

Indications you are getting poorer or have a heavier burden



Changes in Foundation Aid Per Student for Each Decile CWR and FRPL (Executive Budget)



Enacted School Budget Year	Foundation Aid Formula Base	Current School Year Foundation Aid	Increase From Prior Year	Percent Increase Foundation Aid from Previous Year	Full Foundation Aid Phase-in Level	Gap Elimination Adjustment (Without 2010-11 Federal "Restoration" of \$725,919,272)	Current Year Foundation Aid Received By District (Current Foundation Aid Minus GEA)	Increase From Prior Year Minus GEA	Percent Increase Foundation Aid from Previous Year Minus GEA
2007-08	\$12,533,400,433	\$13,640,051,880	\$1,106,651,447	8.8%	\$18,045,176,847	\$0	\$13,640,051,880	\$1,106,651,447	8.8%
2008-09	\$12,534,953,499	\$14,860,857,492	\$2,325,903,993	18.6%	\$18,482,996,003	\$0	\$14,860,857,492	\$2,325,903,993	18.6%
2009-10	\$12,535,617,968	\$14,874,908,412	\$2,339,290,444	18.7%	\$19,141,053,898	\$0	\$14,874,908,412	\$2,339,290,444	18.7%
2010-11	\$12,536,141,101	\$14,893,140,007	\$2,356,998,906	18.8%	\$19,201,433,108	(\$2,138,069,821)	\$12,755,070,186	\$218,929,085	1.7%
2011-12	\$14,893,624,431	\$14,893,624,431	\$0	0.0%	\$20,434,466,557	(\$2,556,482,217)	\$12,337,142,214	(\$2,556,482,217)	-17.2%
2012-13	\$14,893,624,431	\$15,005,164,626	\$111,540,195	0.7%	\$20,526,873,363	(\$2,156,231,781)	\$12,848,932,845	(\$2,044,691,586)	-13.7%
2013-14	\$15,005,330,644	\$15,176,700,154	\$171,369,510	1.1%	\$20,505,636,197	(\$1,638,788,735)	\$13,537,911,419	(\$1,467,419,225)	-9.8%
2014-15	\$15,181,402,340	\$15,432,036,361	\$250,634,021	1.7%	\$20,131,976,391	(\$1,036,669,680)	\$14,395,366,681	(\$786,035,659)	-5.2%
2015-16	\$15,432,476,862	\$15,860,682,720	\$428,205,858	2.8%	\$20,087,190,679	(\$433,599,665)	\$15,427,083,055	(\$5,393,807)	0.0%
2016-17	\$15,856,344,811	\$16,482,951,037	\$626,606,226	4.0%	\$20,058,381,319	\$0	\$16,482,951,037	\$626,606,226	4.0%
2017-18	\$16,474,223,647	\$17,174,244,793	\$700,021,146	4.2%	\$20,532,925,959	\$0	\$17,174,244,793	\$700,021,146	4.2%
2018-19* Ex Budget	\$17,172,763,848	\$17,510,389,872	\$337,626,024	2.0%	\$21,135,972,294	\$0	\$17,510,389,872	\$337,626,024	2.0%
Totals	\$175,049,904,015	\$185,804,751,785	\$10,754,847,770	6.1%	\$238,284,082,615	(\$9,959,841,899)	\$175,844,909,886	\$795,005,871	0.5%

Let's not just look at the last few years... let's look at the whole picture

Enacted School Budget Year	Difference Between Full Phase-in and Current School Year Aid (SHORT)	Difference Between Full Phase-in and Current School Year Aid Minus GEA (REAL SHORT)
2007-08	(\$4,405,124,967)	(\$4,405,124,967)
2008-09	(\$3,622,138,511)	(\$3,622,138,511)
2009-10	(\$4,266,145,486)	(\$4,266,145,486)
2010-11	(\$4,308,293,101)	(\$6,446,362,922)
2011-12	(\$5,540,842,126)	(\$8,097,324,343)
2012-13	(\$5,521,708,737)	(\$7,677,940,518)
2013-14	(\$5,328,936,043)	(\$6,967,724,778)
2014-15	(\$4,699,940,030)	(\$5,736,609,710)
2015-16	(\$4,226,507,959)	(\$4,660,107,624)
2016-17	(\$3,575,430,282)	(\$3,575,430,282)
2017-18	(\$3,358,681,166)	(\$3,358,681,166)
2018-19* Ex Budget	(\$3,625,582,422)	(\$3,625,582,422)
Totals	(\$52,479,330,830)	(\$62,439,172,729)


Other Considerations



- **High Tax Aid** – \$223.30 million; frozen at 2013-14 amounts for the 2018-19 school year. (Expand!)
- **Charter School Transitional Aid** – \$48.41 million (increase of \$9.79 million). Formula elements target aid to districts based on the percentage of resident pupils enrolled in charter schools and the percentage of payments made to charter schools compared to a district's total general fund expenditures.
- **Prior Year Claims Forward** Beginning with claims for the 2017-18 aid year, and thereafter, there will be no prior year adjustments. Any changes to state aid data would have to be submitted by November 1st of the year in which the aid is paid.
- **Expense Driven Aid Cap** Beginning in 2019-20 a cap in growth for expensed based aids such as Building, Transportation, and BOCES Aid at 2% for each district within NYS would be applied. The calculated cap would impact each of the three aid categories separately.
- **Proposed Changes to STAR** – The Governor proposes to Cap the annual growth in Basic and Enhanced STAR exemption at 0% (currently 2%) for STAR and Property Tax Collections.
- **Special Education Summer School** - transfer of cost to school Districts. (Eliminate 80% reimbursement for summer school special education, (tied to public excess cost ratio and CWR with max at 90% for the poorest districts, 49% for average wealth and 25% for districts with CWR over 1.47) potential cost addition to districts is ~\$70 million (NYSCOSS))
- **No word on Prior Year Claims**- that currently exist

Income Wealth Index Floor=.65; Ceiling =2.0

Any phase-in % is simply... “made-up”

Income Wealth Index (IWI) IWI (min = 0.65, max = 2.0) = 2014 Adjusted Gross Income (AGI) / TWFPU \$261,100 (State Avg. AGI /TWFPU)	 Actual IWI (Floor = .65) CURRENT	County	Aid Chg with IWI Change to Zero Floor	As Calculated in 2016-17	Difference
600301	CANDOR	Tioga	\$194,895	\$137,528	\$57,367
110200	CORTLAND	Cortland	\$103,461	-	103,461
250301	DE RUYTER	Madison	\$137,794	\$147,979	-\$10,185
610501	GROTON	Tompkins	\$173,084	\$111,435	\$61,649
110701	HOMER	Cortland	\$1,143,453	\$759,820	\$383,633
421504	LYNCOURT	Onondaga	\$266,090	\$171,584	\$94,506
420702	SOLVAY	Onondaga	\$921,204	\$680,285	\$240,920
421800	SYRACUSE	Onondaga	\$4,972,928	\$3,977,255	\$995,673

*Estimates from 2017-18 budget

Foundation Aid- A Rationale: The School District Expenditure Considerations:

Poverty is not Poverty is not poverty-

- local governmental service levels and other supports, historical issues, cost of living issues, concentration of poverty.

Cost escalations faced by all districts-

- health insurance, contractual obligations, and mandates

Less students does not translate into automatic savings-

- student demographics, student learning needs,
 - Class sizes
 - Grade level sizes
 - “Neighborhood” schools/Attendance Zones
 - increased educational expectations-
 - state assessments, remedial courses, advanced courses

The increased mission of the school district-

- Before school Programs
- After School Programs
- Summer Programs
- Extracurricular activities
- Cocurricular activities
- Breakfast Programs
- Health care
- Social Services

Foundation Aid Recommendations:

For Foundation aid to work a number of elements must be in place:

- 1. Increased weighting of all of the following Foundation Aid formula factors:
CWR , FRPL, SAIPE, ELL**
- 2. There needs to include a more inclusive use of Direct Certification to other programs (HEAP)**
- 3. Eliminate the Income Wealth Index floor (IWI floor = zero)**
- 4. Also, some reasonable accommodation must be made for district that have entered programs that grant all children free lunch/breakfast**
- 5. There must be an increase in the Adjusted Foundation Aid Amount (AFA) to reflect more realistic cost of educating a single child (Adequacy)**
- 6. Rationally determine the level of support for save harmless districts based on wealth and demographics of students (Equity)**
- 7. Begin a legitimate Phase-in of an updated and repaired Foundation Aid Formula immediately**
- 8. Caps within the formula would sparingly be used a part of a legitimate phase-in plan**

Legislative Asks:

Equity, Adequacy, Predictability, Sustainability



Preamble: School Districts consider the 2007-08 Foundation Aid formula, its general concepts, construct and promulgation sacrosanct.

School districts believe that the Foundation Aid formula must be quickly improved in the following areas:

- 1) The further development of more equitable distribution of funds among school districts based on accurate representations of fiscal capacity and poverty as well as the demographics of the student population relative to our educational mission.
- 2) The adequacy of funds within the formula based on the actual costs of education for each school district that allows it to achieve their educational mission, under the obligations contained in state law and regulation.
- 3) The development of a distinct phase-in plan over the next few years for an improved Foundation Aid formula to accomplish equity and adequacy so that state aid is significantly more predictable for each school district.
- 4) The development of a sound financial plan to sustain state aid to school districts by the state.