



@ricktimbs
@SSFC_NYS

SSFC

THE STATEWIDE SCHOOL FINANCE CONSORTIUM

Dedicated to Secure Equitable Funding for New York State Public Schools

State Aid & New York State Public School Districts

Cayuga Onondaga School Boards Association


In education, there is a golden triangle of quantity, quality and equity. You can't just ignore one while strengthening the others.
Sitaram Yechury

Dr. Rick Timbs


Executive Director


Statewide School Finance Consortium


[*rtimbs@statewideonline.org*](mailto:rtimbs@statewideonline.org)

 01/14/18	County	E(FA0198) 00 2017-18 FOUNDATION AID	E(FA0197) 00 2018-19 FOUNDATION AID	\$ CHANGE IN FOUNDATION AID	% CHANGE IN FOUNDATION AID
AUBURN	Cayuga	\$29,784,416	\$30,194,277	\$409,861	1.38%
CATO MERIDIAN	Cayuga	\$9,294,494	\$9,439,165	\$144,671	1.56%
JORDAN ELBRIDG	Onondaga	\$9,982,218	\$10,131,286	\$149,068	1.49%
MORAVIA	Cayuga	\$8,462,032	\$8,587,737	\$125,705	1.49%
PORT BYRON	Cayuga	\$9,002,760	\$9,142,946	\$140,186	1.56%
SKANEATELES	Onondaga	\$3,987,458	\$3,997,426	\$9,968	0.25%
SOUTHERN CAYUG	Cayuga	\$6,353,863	\$6,369,747	\$15,884	0.25%



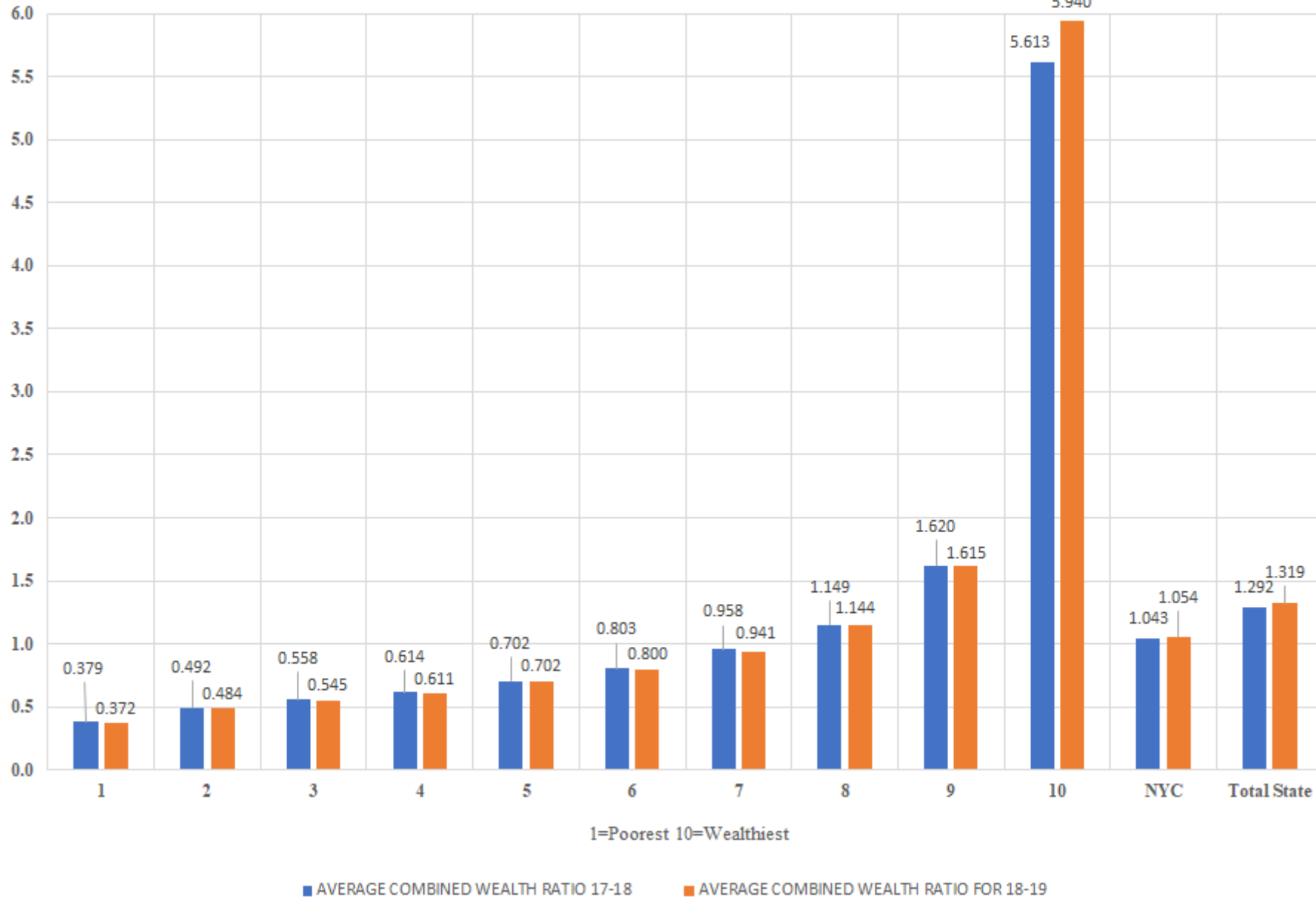
 01/14/18	W(FA0001) 00 FOUNDATION AID BEFORE PHASE-IN	W(FA0001) 00 FOUNDATION AID BEFORE PHASE-IN 2017-18	DIFFERENCE FOUNDATION AID BEFORE PHASE-IN	UNDER/ SAVE HARMLESS FUNDED FINAL BUDGET (Based on W(FA0001) 00 FOUNDATION AID BEFORE PHASE-IN (01/14/18 DABTB1)	UNDER/ SAVE HARMLESS FINAL BUDGET (Based on W(FA0001) 00 FOUNDATION AID BEFORE PHASE-IN (04/9/17 DABTB1)
AUBURN	\$35,571,531	\$35,050,223	\$521,308	-\$5,377,254	-\$5,262,677
CATO MERIDIAN	\$9,524,192	\$9,199,251	\$324,941	-\$85,027	\$95,242
JORDAN ELBRIDG	\$9,562,587	\$8,923,208	\$639,379	\$568,699	\$1,059,010
MORAVIA	\$9,472,920	\$9,190,491	\$282,429	-\$885,183	-\$769,487
PORT BYRON	\$9,423,617	\$9,990,482	-\$566,865	-\$280,671	-\$987,723
SKANEATELES	\$2,288,608	\$2,855,003	-\$566,395	\$1,708,818	\$1,132,454
SOUTHERN CAYUG	\$4,133,166	\$3,522,763	\$610,403	\$2,236,581	\$2,831,099

 01/14/18	AC(WM0195) 05 PUPIL WEALTH RATIO (PWR) FOR FND SSR	AD(WM0196) 05 ALTERNATE PUPIL WEALTH RATIO (APWR), FND	AE(WM0197) 05 COMBINED WEALTH RATIO FOR 18-19 FND SSR	G(WM0180) 05 PUPIL WEALTH RATIO (PWR) 2017-18	H(WM0181) 05 ALTERNATE PUPIL WEALTH RATIO (APWR) 2017-18	I(WM0182) 05 COMBINED WEALTH RATIO (CWR) FOR 17- 18 AID 2017- 18	CWR DIFFERENCE 2017-18 to 2018-19
AUBURN	0.550	0.603	0.576	0.5450	0.5940	0.5690	0.007
CATO MERIDIAN	0.491	0.525	0.507	0.4910	0.5190	0.5040	0.003
JORDAN ELBRIDG	0.530	0.616	0.573	0.5430	0.6210	0.5810	-0.008
MORAVIA	0.712	0.505	0.608	0.7060	0.4880	0.5970	0.011
PORT BYRON	0.458	0.600	0.529	0.4390	0.5130	0.4750	0.054
SKANEATELES	1.786	2.150	1.968	1.7680	1.5760	1.6720	0.296
SOUTHERN CAYUG	1.200	0.802	1.001	1.2140	1.0020	1.1080	-0.107

 01/14/18	EXECUTIVE BUDGET FOUNDATION AID PER STUDENT	FOUNDATION AID INCREASE PER STUDENT 2017-18 TO EXECUTIVE BUDGET 2018-19	UNDER/ SAVE HARMLESS FUNDED PER STUDENT FINAL BUDGET 2017-18	Economic Region Title	CWR Decile 1=Poorest 10=Wealthiest	FRPL Decile 1=Poorest 10=Wealthiest	CENSUS Decile 1=Poorest 10=Wealthiest
AUBURN	\$7,181	\$97	-\$1,279	Central New York	3	4	2
CATO MERIDIAN	\$10,396	\$159	-\$94	Central New York	2	5	4
JORDAN ELBRIDG	\$8,257	\$121	\$463	Central New York	3	7	6
MORAVIA	\$8,579	\$126	-\$884	Central New York	4	4	5
PORT BYRON	\$10,148	\$156	-\$312	Central New York	3	4	5
SKANEATELES	\$2,888	\$7	\$1,235	Central New York	9	10	9
SOUTHERN CAYUG	\$9,579	\$24	\$3,363	Central New York	7	5	6



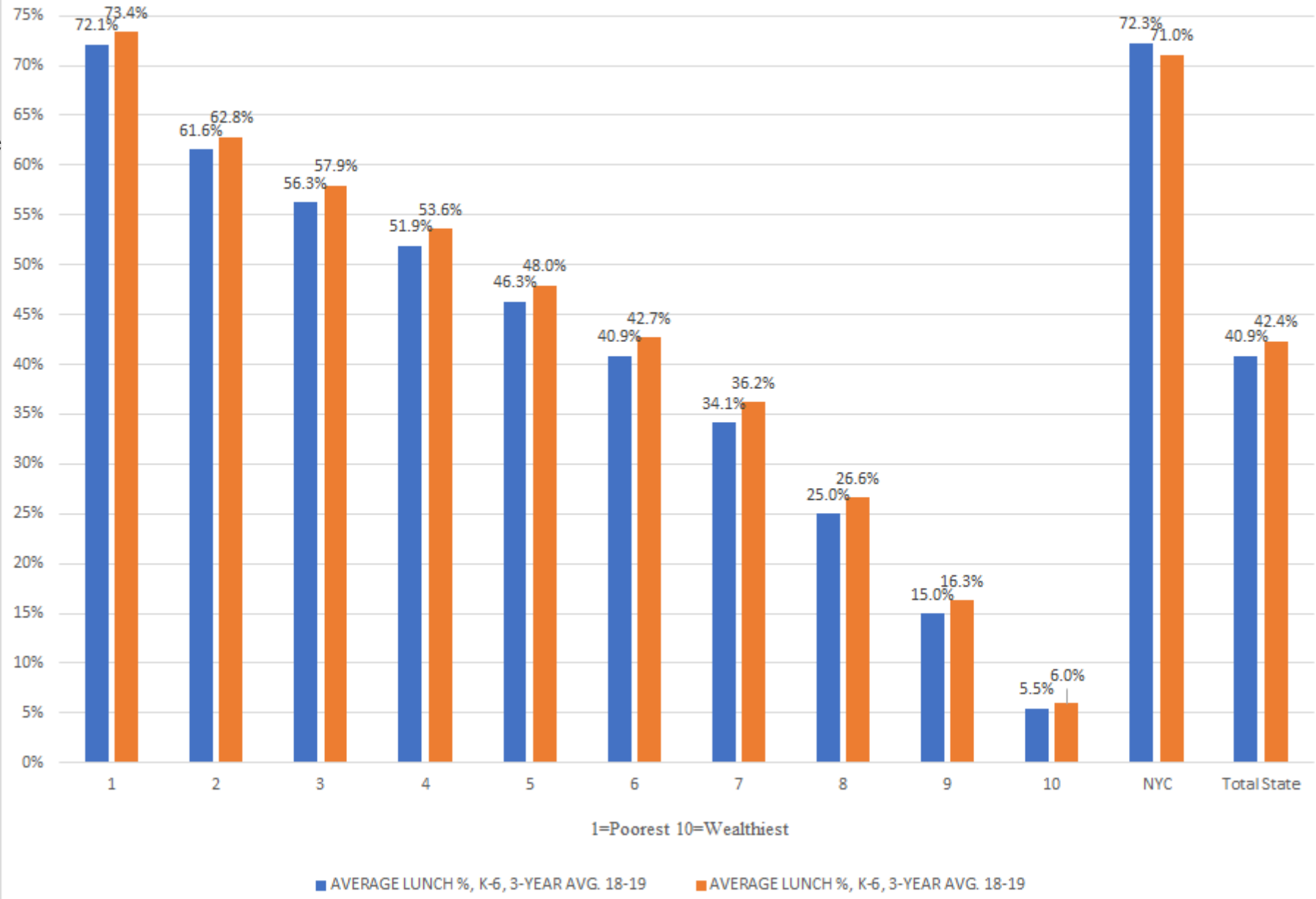
Comparison Average CWR in Each CWR Decile: 2017-18 to 2018-19



Indications you are getting poorer or have a heavier burden




Comparison Average FRPL in Each FRPL Decile: 2017-18 to 2018-19



Indications you are getting poorer or have a heavier burden

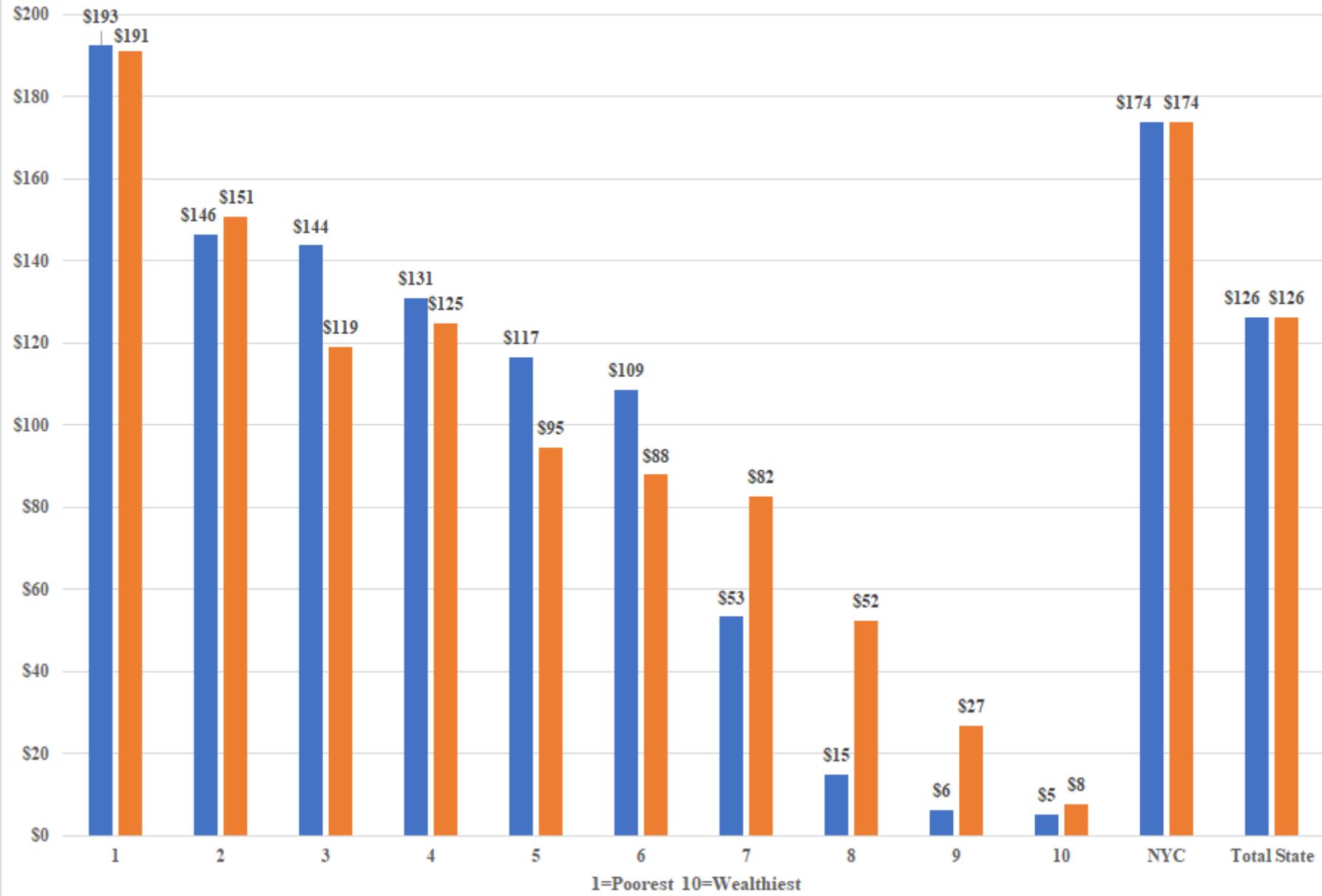


Indications you are getting poorer or have a heavier burden

 01/14/18	CWR DIFFERENCE 2017-18 to 2018-19	FRPL DIFFERENCE 2017-18 TO 2018-19	ENROLLMENT DIFFERENCE 2017-18 to 2018-19
CATO MERIDIAN	0.003	2.88%	13
AUBURN	0.007	0.56%	78
JORDAN ELBRIDG	-0.008	2.79%	23
PORT BYRON	0.054	2.35%	21
MORAVIA	0.011	0.73%	-20
SOUTHERN CAYUG	-0.107	2.89%	-17
SKANEATELES	0.296	1.44%	-16



Changes in Foundation Aid Per Student for Each Decile CWR and FRPL (Executive Budget)



Enacted School Budget Year	Foundation Aid Formula Base	Current School Year Foundation Aid	Increase From Prior Year	Percent Increase Foundation Aid from Previous Year	Full Foundation Aid Phase-in Level	Gap Elimination Adjustment (Without 2010-11 Federal "Restoration" of \$725,919,272)	Current Year Foundation Aid Received By District (Current Foundation Aid Minus GEA)	Increase From Prior Year Minus GEA	Percent Increase Foundation Aid from Previous Year Minus GEA
2007-08	\$12,533,400,433	\$13,640,051,880	\$1,106,651,447	8.8%	\$18,045,176,847	\$0	\$13,640,051,880	\$1,106,651,447	8.8%
2008-09	\$12,534,953,499	\$14,860,857,492	\$2,325,903,993	18.6%	\$18,482,996,003	\$0	\$14,860,857,492	\$2,325,903,993	18.6%
2009-10	\$12,535,617,968	\$14,874,908,412	\$2,339,290,444	18.7%	\$19,141,053,898	\$0	\$14,874,908,412	\$2,339,290,444	18.7%
2010-11	\$12,536,141,101	\$14,893,140,007	\$2,356,998,906	18.8%	\$19,201,433,108	(\$2,138,069,821)	\$12,755,070,186	\$218,929,085	1.7%
2011-12	\$14,893,624,431	\$14,893,624,431	\$0	0.0%	\$20,434,466,557	(\$2,556,482,217)	\$12,337,142,214	(\$2,556,482,217)	-17.2%
2012-13	\$14,893,624,431	\$15,005,164,626	\$111,540,195	0.7%	\$20,526,873,363	(\$2,156,231,781)	\$12,848,932,845	(\$2,044,691,586)	-13.7%
2013-14	\$15,005,330,644	\$15,176,700,154	\$171,369,510	1.1%	\$20,505,636,197	(\$1,638,788,735)	\$13,537,911,419	(\$1,467,419,225)	-9.8%
2014-15	\$15,181,402,340	\$15,432,036,361	\$250,634,021	1.7%	\$20,131,976,391	(\$1,036,669,680)	\$14,395,366,681	(\$786,035,659)	-5.2%
2015-16	\$15,432,476,862	\$15,860,682,720	\$428,205,858	2.8%	\$20,087,190,679	(\$433,599,665)	\$15,427,083,055	(\$5,393,807)	0.0%
2016-17	\$15,856,344,811	\$16,482,951,037	\$626,606,226	4.0%	\$20,058,381,319	\$0	\$16,482,951,037	\$626,606,226	4.0%
2017-18	\$16,474,223,647	\$17,174,244,793	\$700,021,146	4.2%	\$20,532,925,959	\$0	\$17,174,244,793	\$700,021,146	4.2%
2018-19* Ex Budget	\$17,172,763,848	\$17,510,389,872	\$337,626,024	2.0%	\$21,135,972,294	\$0	\$17,510,389,872	\$337,626,024	2.0%
Totals	\$175,049,904,015	\$185,804,751,785	\$10,754,847,770	6.1%	\$238,284,082,615	(\$9,959,841,899)	\$175,844,909,886	\$795,005,871	0.5%

Enacted School Budget Year	Difference Between Full Phase-in and Current School Year Aid (SHORT)	Difference Between Full Phase-in and Current School Year Aid Minus GEA (REAL SHORT)
2007-08	(\$4,405,124,967)	(\$4,405,124,967)
2008-09	(\$3,622,138,511)	(\$3,622,138,511)
2009-10	(\$4,266,145,486)	(\$4,266,145,486)
2010-11	(\$4,308,293,101)	(\$6,446,362,922)
2011-12	(\$5,540,842,126)	(\$8,097,324,343)
2012-13	(\$5,521,708,737)	(\$7,677,940,518)
2013-14	(\$5,328,936,043)	(\$6,967,724,778)
2014-15	(\$4,699,940,030)	(\$5,736,609,710)
2015-16	(\$4,226,507,959)	(\$4,660,107,624)
2016-17	(\$3,575,430,282)	(\$3,575,430,282)
2017-18	(\$3,358,681,166)	(\$3,358,681,166)
2018-19* Ex Budget	(\$3,625,582,422)	(\$3,625,582,422)
Totals	(\$52,479,330,830)	(\$62,439,172,729)

Let's not just look at the last few years... let's look at the whole picture


Other Considerations



- **High Tax Aid** – \$223.30 million; frozen at 2013-14 amounts for the 2018-19 school year. (Expand!)
- **Charter School Transitional Aid** – \$48.41 million (increase of \$9.79 million). Formula elements target aid to districts based on the percentage of resident pupils enrolled in charter schools and the percentage of payments made to charter schools compared to a district's total general fund expenditures.
- **Prior Year Claims Forward** Beginning with claims for the 2017-18 aid year, and thereafter, there will be no prior year adjustments. Any changes to state aid data would have to be submitted by November 1st of the year in which the aid is paid.
- **Expense Driven Aid Cap** Beginning in 2019-20 a cap in growth for expensed based aids such as Building, Transportation, and BOCES Aid at 2% for each district within NYS would be applied. The calculated cap would impact each of the three aid categories separately.
- **Proposed Changes to STAR** – The Governor proposes to Cap the annual growth in Basic and Enhanced STAR exemption at 0% (currently 2%) for STAR and Property Tax Collections.
- **Special Education Summer School** - transfer of cost to school Districts. (Eliminate 80% reimbursement for summer school special education, (tied to public excess cost ratio and CWR with max at 90% for the poorest districts, 49% for average wealth and 25% for districts with CWR over 1.47) potential cost addition to districts is ~\$70 million (NYSCOSS))
- **No word on Prior Year Claims**- that currently exist

Income Wealth Index Floor=.65; Ceiling =2.0

Any phase-in % is simply... “made-up”

Income Wealth Index (IWI) IWI (min = 0.65, max = 2.0) = 2014 Adjusted Gross Income (AGI) / TWFPU \$261,100 (State Avg. AGI /TWFPU)	 Actual IWI (Floor = .65) CURRENT	County	Aid Chg with IWI Change to Zero Floor	As Calculated in 2016-17	Difference
050100	AUBURN	Cayuga	\$2,238,286	\$1,743,202	\$495,084
050401	CATO MERIDIAN	Cayuga	\$575,939	\$534,561	\$41,378
420501	JORDAN ELBRIDG	Onondaga	\$208,434	-	208,434
051301	MORAVIA	Cayuga	\$952,840	\$558,182	\$394,658
051101	PORT BYRON	Cayuga	\$391,297	\$125,526	\$265,771

*Estimates from 2017-18 budget